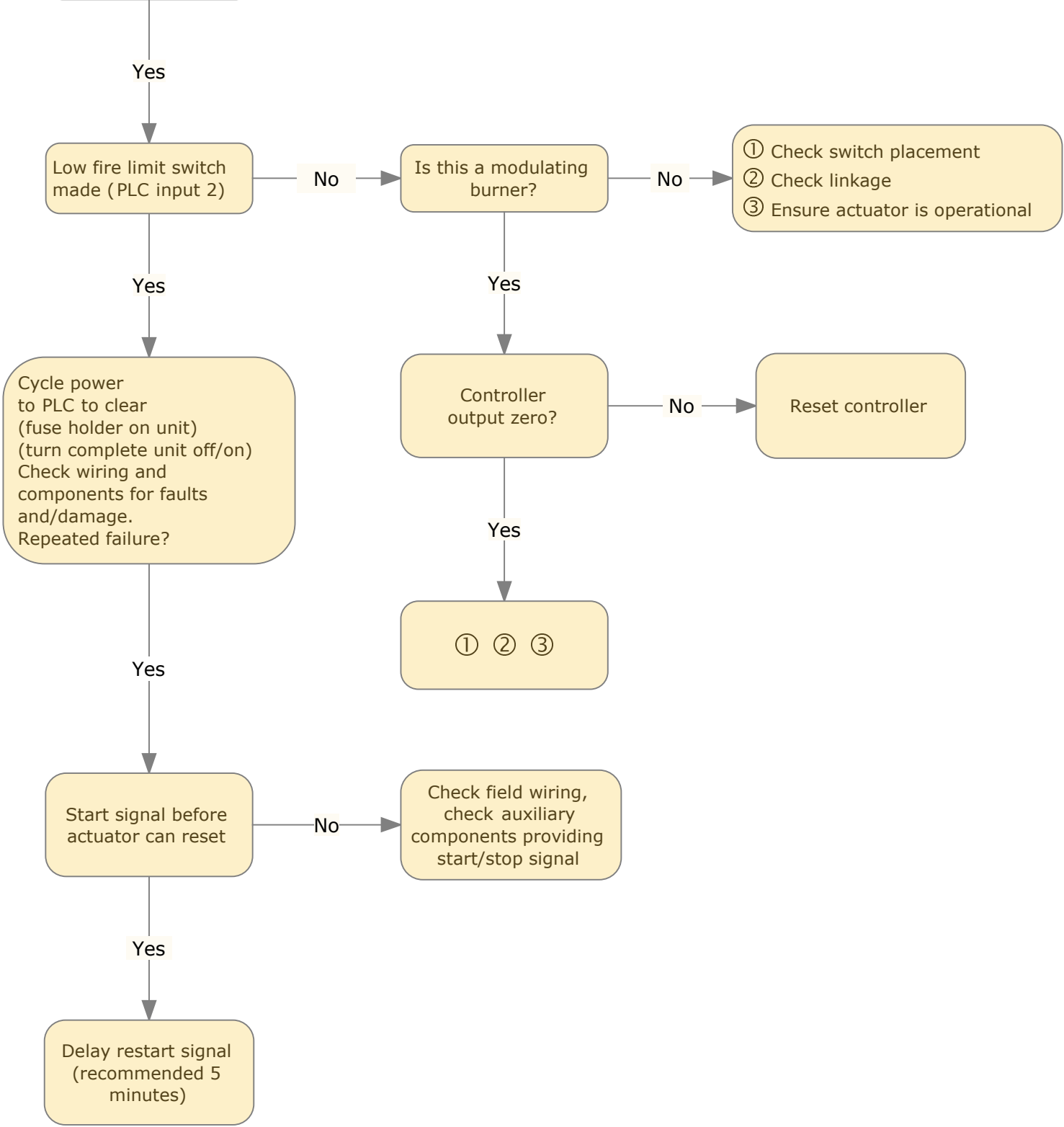
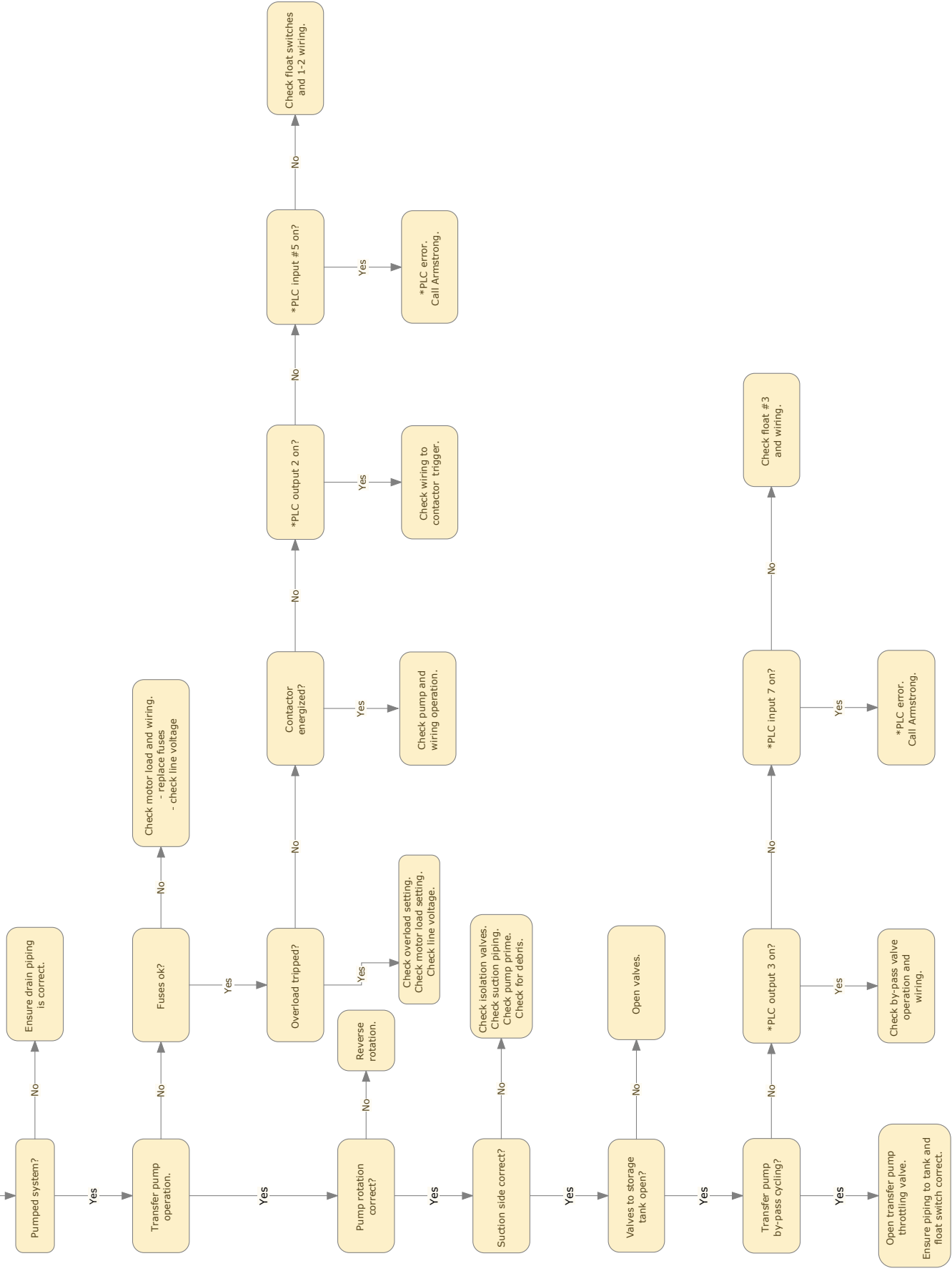


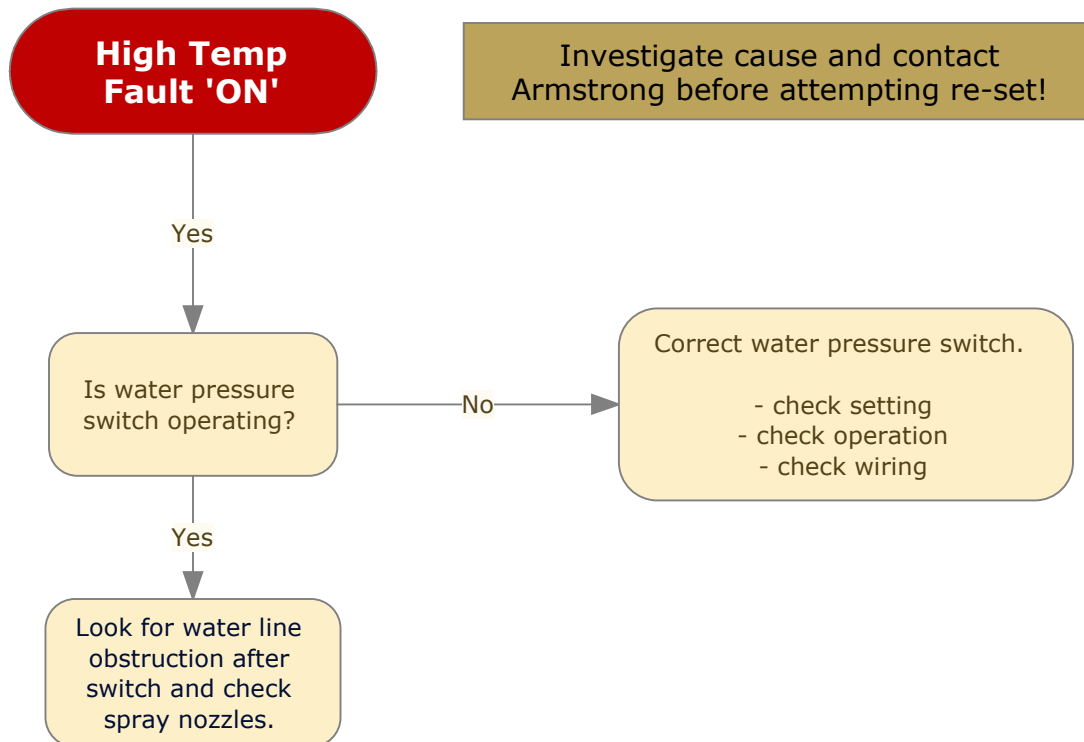
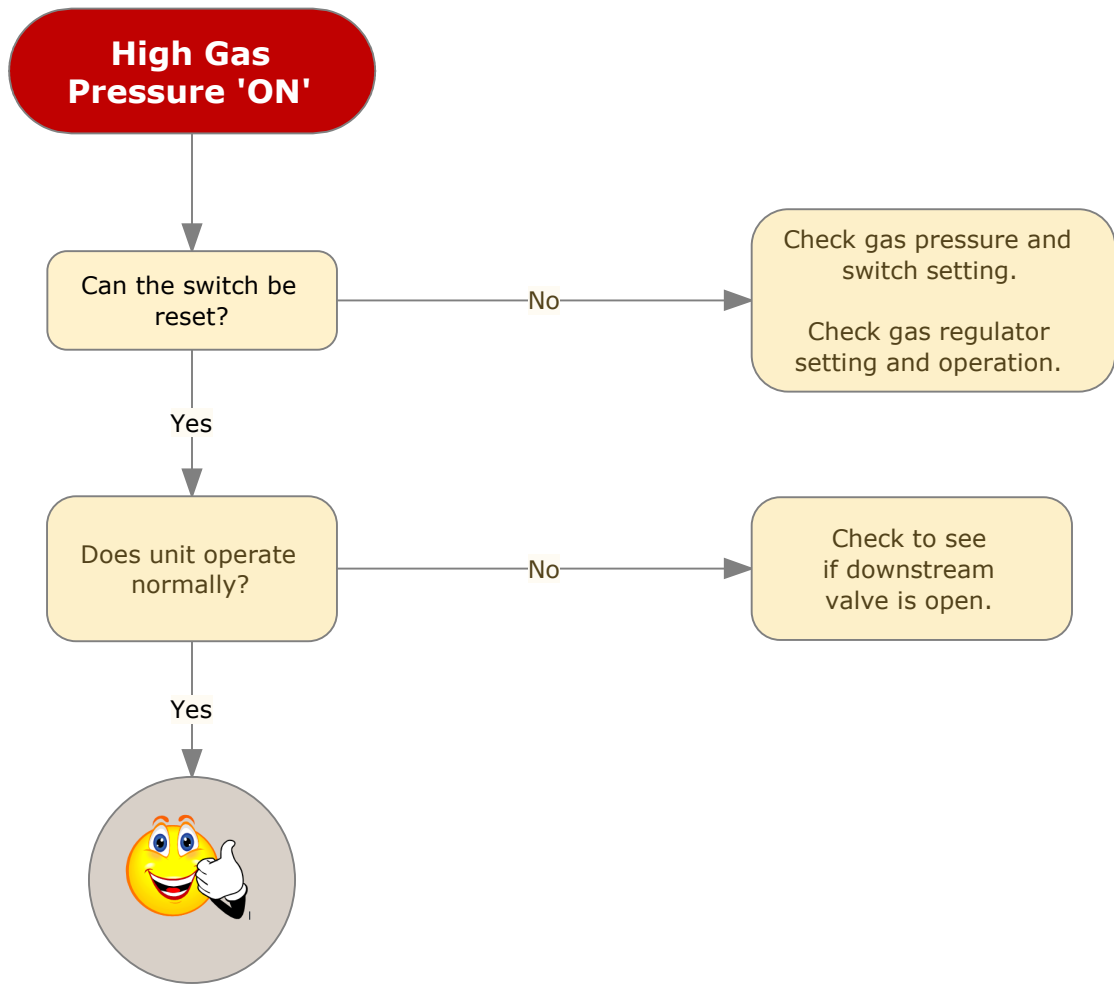
Actuator Fault 'ON'



Tank Full Fault 'ON'



* PLC = Programmable Logic Controller



**Low Gas
'ON'**

Can the switch be reset?

No

Check gas pressure and switch setting.

Yes

Does unit operate normally?

No

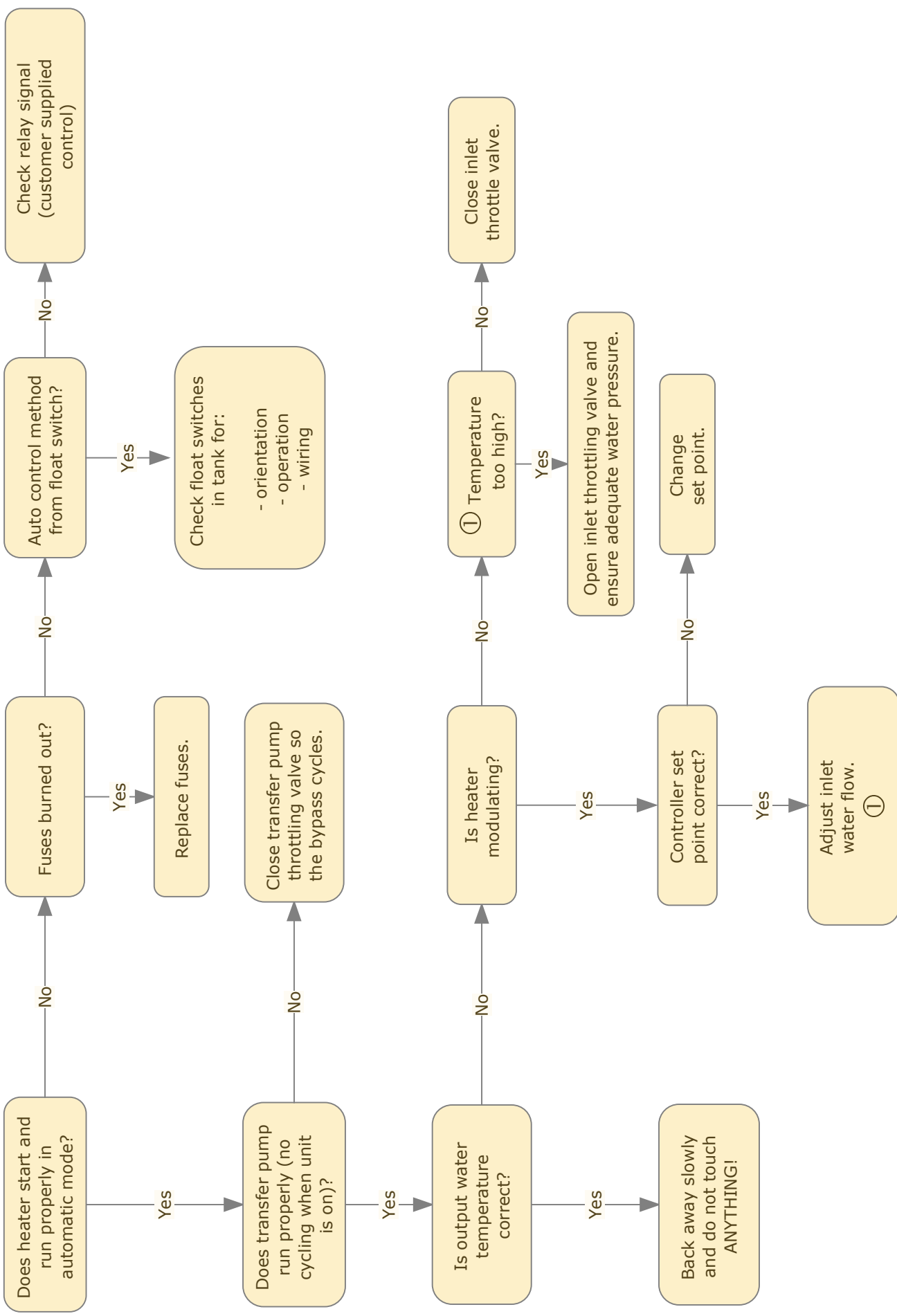
Look for upstream gas limitation.

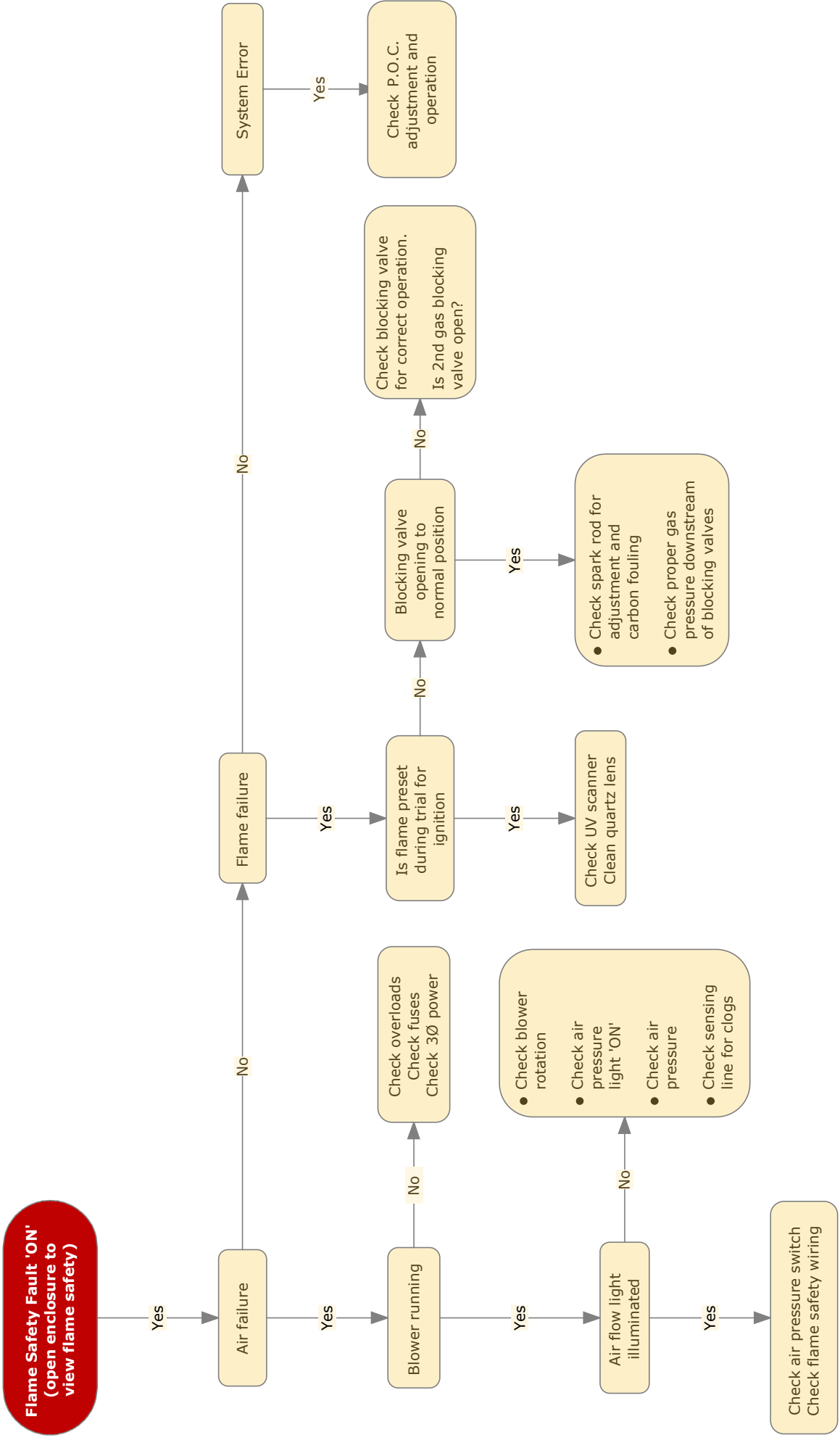
- Check:
- gas regulator
 - confirm line size to specification
 - other equipment using gas

Yes



Flo-Direct Operation and Troubleshooting





Water Pressure Fault 'ON'

With water flowing (inlet valve bypassed open - minimum 10 psi)

